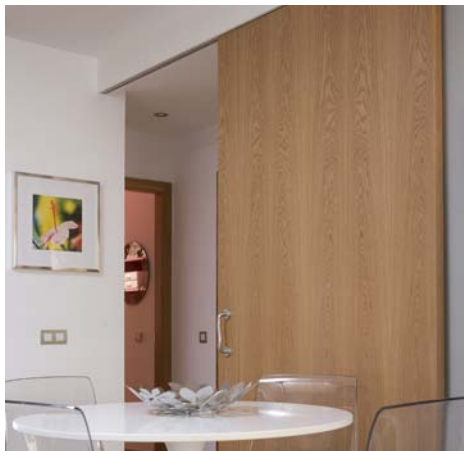




### EDIFICIO MIGJORN

Tomás Forteza 39. Palma de Mallorca. Islas Baleares



### FRAME

Foundation. Reinforced concrete slab foundation underneath pillars, according to the instructions from Implementation Project.

Frame. Framed waffle slab on reinforced concrete or metallic supports, according to the instructions from Implementation Project.

### OUTSIDE CLOSURES

Fronts. Hollow brickwork outside, expanded polystyrene and hollow brick partition inside

Trafficable inverted flat roof. Slope formation on framework. Waterproof membrane. Thermal insulation of expanded polystyrene. Mortar Portland cement. Paving with ceramic stoneware flooring or similar including skirting board. Outside woodwork. Lacquered metalwork and fixed aluminium slat mattress in laundry room. Reinforced access door with handle and spyhole.

Ironworks. Aluminium or metallic railing and security glass in windows and terraces, to define by project management team. Metallic handrails.

Blinds. Exterior aluminium blinds in bedrooms.

Glassworks. Double Climalit 6+12+6 glazing with sunscreen on outside windows.

### PARTITIONS AND INSIDE ELEMENTS

Partitions. Thick partition made with hollow bricks with mortar portland cement for inside partitions. Dividing wall of double partition wall of concrete block and fiberglass or rock wool board for acoustic insulation.

Inside Woodworks. Doors with pine doorframe to cover and plated lacquered leaf or varnished in his natural oak color.

Ceilings. Ceilings made with plaster smooth planks covering installations, according to the project.



### EDIFICIO MIGJORN

Tomás Forteza 39. Palma de Mallorca. Islas Baleares



### FINISHES

**Flooring.** Tiled floor of porcelain stoneware inside and skirting board. Tiled floor of ceramic stoneware in terraces and laundry room. Marble, granite or similar floor in communal halls and stairs. Planed cement floor in car park and communal passages.

**Inside coatings.** Horizontal and vertical inside facings in plaster, excluding bathrooms, kitchen and laundry room. Half way up tiled in bathroom and kitchen, combined with painted plastering tiled in laundry room.

**Outside coatings.** Render with mortar Portland cement in outside facings.

**Paints.** Outside facings painted with stony rough paint. Inside facings painted with white smooth plastic paint.

**Stoneworks.** Threshold and windows ledge made by natural stone pieces like Bateig or similar on exterior windows and doors.

### FURNITURE

The only furniture that are hand over with the house will be the bathroom fittings drawn on project plan and the kitchen equipment that is consisting of: melamine pieces of furniture. Synthetic resin sink. Stainless steel oven, extractor hood, and gas cooker.



### PLUMBING

Complete plumbing installation, cool and hot water. The whole plumbing installation is made of copper tube, polythene or similar material. The hot water piping will be insulated by Armaflex or similar. Single water meter for each house. "Europa" by Sangrá or similar white bathroom fittings to define according to project plan. Set of mixer tap, excluding laundry room, still to define. "Euro Ebro" by Sangrá white porcelain sink or similar with wall tap including metallic support. Gas accumulator for hot water. Dishwasher and washing machine preinstallation. Air conditioned installation in dining room and bedrooms by splits.





### EDIFICIO MIGJORN

Tomás Forteza 39. Palma de Mallorca. Islas Baleares



### SEWAGE AND VENTILATION

PVC water and sewage infrastructure. Natural airing in bathrooms through windows in facade. Kitchens with compulsory permanent airing.

### ELECTRICITY

Built-in electric installation, protected with automatic switches on Fuse box. With Forroplast tubes or similar, and copper cable, according to the project. BJC electrical mechanisms or similar. Automatical Video entry phone for pedestrians access. Communal aerial ready to the tuning FM and national channels, according to the Telecommunications project. Pre-installed burglar alarm.

### LIFTS

Electrical lifts in houses floors access and car park.

The company MARINA DE GOTMAR S.L reserves the right to change any element or material described in this "Building materials and qualities specifications" for other that has the same quality and performance level. The finishes in the showflat are a sample, may not correspond in its fully terms listed in this "Building materials and qualities Specifications".